



# TREES FOR GUELPH

"a project for improving Guelph's urban environment"

[www.treesforguelph.ca](http://www.treesforguelph.ca)

## EARTH DAY PLANTING EVENT: Friday April 22, 2022



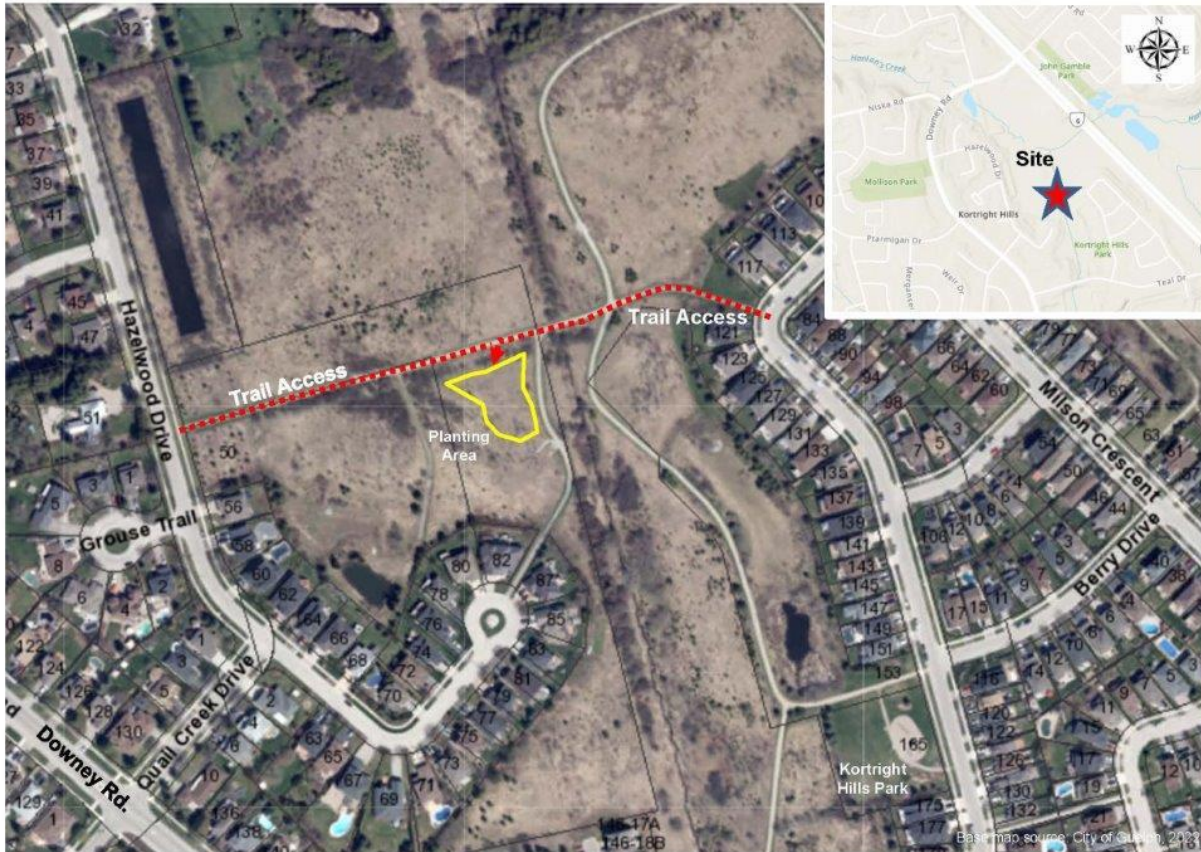
We are pleased to announce our **Earth Day** kick off to our annual planting season. Join us starting at 9:00 am at the Kortright Hills Natural Area site ([locational map attached](#)). We will continue to plant until 5 pm or when our trees run out. **At 11 am we will be joined by the Mayor, our MP, our MPP, sponsors and other guests for a special event.** We provide shovels, pails, water, mulch and how to plant guidance. Bring gloves, personal water and any other gear that might be appropriate for that day.

Also, we have three Saturday **Community Planting Events** coming up (May 7<sup>th</sup>, May 14<sup>th</sup> and May 28<sup>th</sup>). Check our web page, [treesforguelph.ca](http://treesforguelph.ca), for complete details on all upcoming planting events.

For further information, contact: [moritzsanio@gmail.com](mailto:moritzsanio@gmail.com).

Earth Day Community Tree Planting:

Friday, April 22<sup>nd</sup>, 2022



**Körtwright Hills Natural Area Community Planting (April 22, 2022)**

The location is at Körtwright Hills Community Park. Parking is available on the streets near the trail access points between 117 and 121 Milson Crescent or near 50 Hazelwood Drive. A portable toilet will be available near the planting area.

We plant rain or shine or (hopefully not) snow.

Please wear sturdy footwear and layers of clothing that are comfortable to work have fun in. It is surprising how easily you can warm up when planting. Some people prefer to wear gloves while other planters enjoy the feeling of soil under their fingernails.

We recommend a water bottle and sunscreen if the day is just a little bit sunny. The sun can be very strong in early spring. Bring snacks too.